

Tuba

# Christmas Carols

## 1. O Come, O Come Emmanuel

Three staves of musical notation for the tuba part of 'O Come, O Come Emmanuel'. The music is in a bass clef with a key signature of two flats (B-flat and E-flat) and a 4/4 time signature. The melody consists of eighth and quarter notes, with some dotted rhythms. The first staff contains the first 12 measures, the second staff contains the next 12 measures, and the third staff contains the final 12 measures, ending with a double bar line.

## 2. Joy to the World

Three staves of musical notation for the tuba part of 'Joy to the World'. The music is in a bass clef with a key signature of two flats (B-flat and E-flat) and a 4/4 time signature. The melody features a mix of quarter, eighth, and dotted notes. The first staff contains the first 12 measures, the second staff contains the next 12 measures, and the third staff contains the final 12 measures, ending with a double bar line.

## 3. Away in a Manger

Two staves of musical notation for the tuba part of 'Away in a Manger'. The music is in a bass clef with a key signature of two flats (B-flat and E-flat) and a 3/4 time signature. The melody is primarily composed of quarter and eighth notes. The first staff contains the first 12 measures, and the second staff contains the final 12 measures, ending with a double bar line.

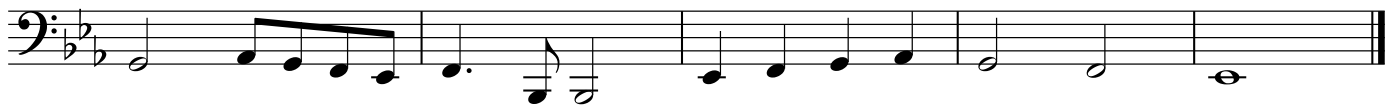
## 4. What Child is This?



## 5. Go, Tell it on the Mountain



6. Angels We Have Heard on High



7. O Little Town of Bethlehem



8. Good King Wenceslas

Three staves of musical notation for the piece 'Good King Wenceslas'. The music is written in bass clef with a key signature of two flats (B-flat and E-flat) and a time signature of 4/4. The first staff contains the first six measures, the second staff contains the next six measures, and the third staff contains the final six measures, ending with a double bar line.

9. Good Christian Men, Rejoice

Four staves of musical notation for the piece 'Good Christian Men, Rejoice'. The music is written in bass clef with a key signature of two flats (B-flat and E-flat) and a time signature of 3/4. The first staff contains the first six measures, the second staff contains the next six measures, the third staff contains the next six measures, and the fourth staff contains the final six measures, ending with a double bar line.

10. The First Noel



11. Silent Night



## 12. Hark, the Herald Angels Sing



## 13. O Come All Ye Faithful



14. We Three Kings

