

Euphonium

# Christmas Carols

## 1. O Come, O Come Emmanuel

Three staves of musical notation for the Euphonium part of 'O Come, O Come Emmanuel'. The music is in a 4/4 time signature with a key signature of two flats (B-flat and E-flat). The notation consists of eighth and quarter notes, with some half notes and a final whole note. The first staff begins with a treble clef, a key signature of two flats, and a 4/4 time signature. The piece concludes with a double bar line.

## 2. Joy to the World

Three staves of musical notation for the Euphonium part of 'Joy to the World'. The music is in a 4/4 time signature with a key signature of two flats (B-flat and E-flat). The notation includes quarter notes, eighth notes, and a half note with a slur. The first staff begins with a treble clef, a key signature of two flats, and a 4/4 time signature. The piece concludes with a double bar line.

## 3. Away in a Manger

Two staves of musical notation for the Euphonium part of 'Away in a Manger'. The music is in a 3/4 time signature with a key signature of two flats (B-flat and E-flat). The notation consists of quarter and eighth notes. The first staff begins with a treble clef, a key signature of two flats, and a 3/4 time signature. The piece concludes with a double bar line.

## Euphonium

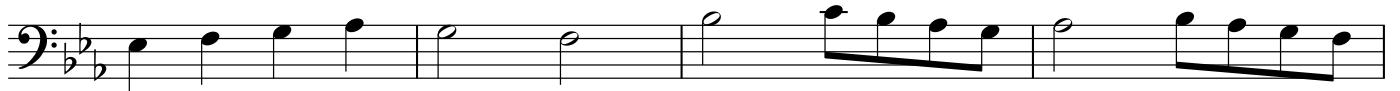
## 4. What Child is This?

Musical score for 'What Child is This?' in bass clef, 3/4 time, B-flat major. The score consists of four staves of music. The first staff begins with a treble clef, a key signature of two flats (B-flat major), and a 3/4 time signature. The melody is written in the bass clef. The piece concludes with a double bar line at the end of the fourth staff.

## 5. Go, Tell it on the Mountain

Musical score for 'Go, Tell it on the Mountain' in bass clef, 4/4 time, B-flat major. The score consists of three staves of music. The first staff begins with a treble clef, a key signature of two flats (B-flat major), and a 4/4 time signature. The melody is written in the bass clef. The piece concludes with a double bar line at the end of the third staff.

6. Angels We Have Heard on High



7. O Little Town of Bethlehem

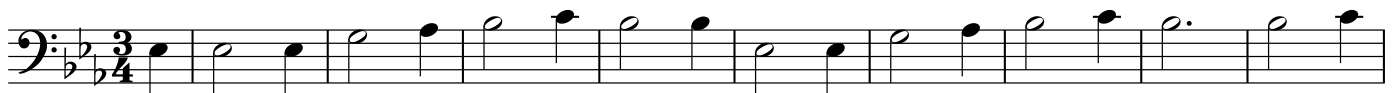


## Euphonium

## 8. Good King Wenceslas



## 9. Good Christian Men, Rejoice



10. The First Noel



11. Silent Night



12. Hark, the Herald Angels Sing

Musical score for 'Hark, the Herald Angels Sing' in bass clef, 4/4 time, and B-flat major. The score consists of four staves of music. The first staff begins with a treble clef and a 4/4 time signature. The melody is written in bass clef. The piece concludes with a double bar line.

13. O Come All Ye Faithful

Musical score for 'O Come All Ye Faithful' in bass clef, 4/4 time, and B-flat major. The score consists of three staves of music. The first staff begins with a treble clef and a 4/4 time signature. The melody is written in bass clef. The piece concludes with a double bar line.

14. We Three Kings

